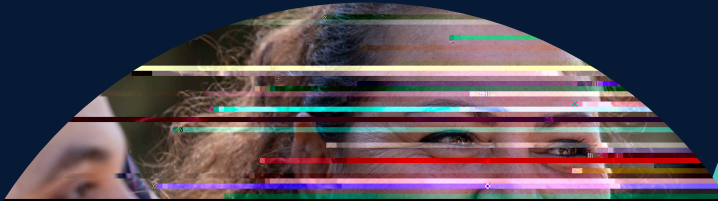


COMMUNITY WORK



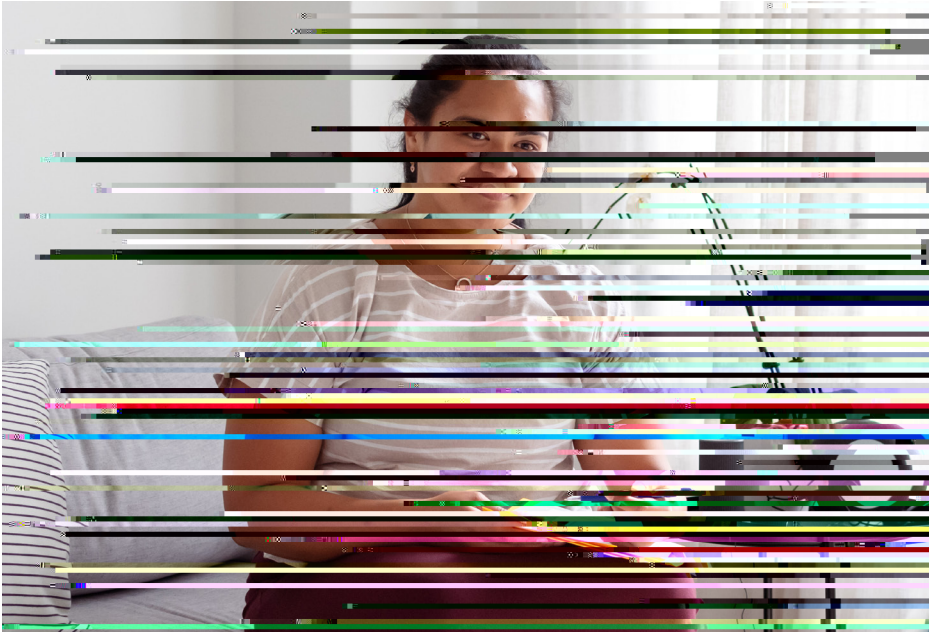
Want a rewarding and meaningful career that will allow you to positively er that will m

Career opportunities

Courses in this area can lead to careers in a variety of settings such as:

- Community worker
- Community development
- Drug and alcohol worker
- Family support worker
- Mental health worker
- Support worker
- Youth worker

ALCOHOL AND OTHER DRUGS



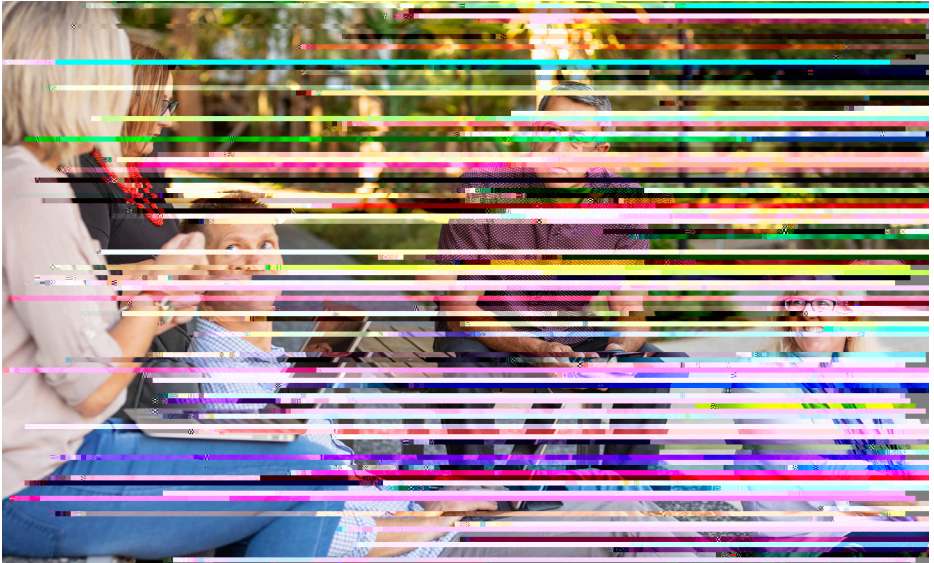
Certificate IV in Alcohol and Other Drugs CHC43215

This course will equip you with the essential skills and knowledge needed to support individuals dealing with alcohol and other drug issues, including specialist techniques

intervention and health promotion.

You will gain hands-on experience through interactions with industry experts and project-based learning, preparing you for roles in community-based organisations, withdrawal services, and residential rehabilitation.

roles where you provide targeted support and implement community interventions under professional guidance, often within established frameworks and limited responsibility, and can lead to career opportunities in community services and



Diploma of Community Services CHC52015*

This course will equip you with the skills and knowledge needed to make a meaningful impact in community services. Through hands-on training, industry insights from active professionals, and project-based learning, you will gain practical experience in various community settings.

and case management workers, you'll learn to manage, coordinate, and deliver



Are you passionate about working with communities and driving social change?

This course is designed for those who want to empower communities and support collective solutions. It provides skills in research, project and event management, consultation, advocacy, and community action. You will worki

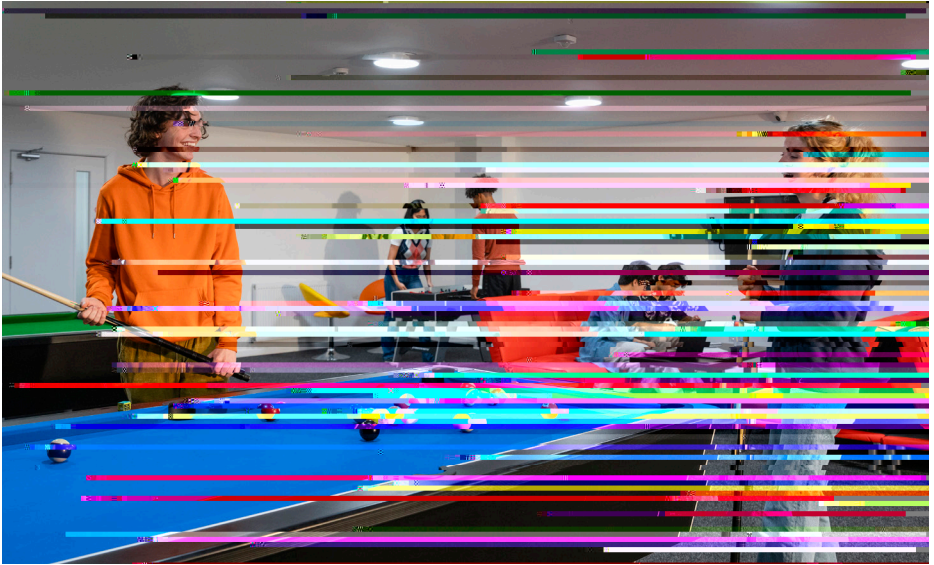


Certificate IV in Mental Health CHC43315

Kickstart your career in mental health sector with an entry-level course, designed to prepare you to support individuals with mental health challenges and coexisting drug and alcohol issues.

This course will equip you with the knowledge to implement community-focused health promotion and prevention strategies, and work within trauma-informed care frameworks. You will gain practical skills through hands-on training in various settings, including community organisations, outreach services, residential care, and clinical environments.

providing recovery-oriented support under the broad guidance of experienced professionals.



Looking to start a rewarding career in youth work?

Through a variety of youth work interventions, including case management,



Technology we